



RHP 9, 10, & 18 present
Collaborative Connections – Impacting Care
A Learning Collaborative Summit

Presenter BIOS



Jefferson Todd Frazier
 Composer & System Director
*Houston Methodist Hospital Center for
 Performing Arts*

Jefferson Todd Frazier is a composer and System Director of Houston Methodist Hospital's Center for Performing Arts Medicine, recipient of the 2017 BCA 10 Award from Americans for the Arts, recognizing the best businesses partnering with the arts in America. He is President of the National Organization for Arts in Health (NOAH) and Founder of American Festival for the Arts (AFA) and Houston Arts Partners. He received his undergraduate and graduate training in composition from The Eastman School of Music and The Juilliard School. He has been honored by the American Academy of Arts and Letters, the Global Alliance for Arts and Healthcare, American Music Therapy Association and served as a Director of the Texas Lyceum. In 2016 Frazier was awarded the Luminary Award from the Eastman School of Music "recognizing individuals who have given extraordinary service to music and the arts at the community and national levels" and on the occasion of the Juilliard School's 100th anniversary in 2006, Frazier was recognized as one of 100 distinguished alumni and profiled in the Juilliard Journal's "A Quiet Revolution: Juilliard Alumni and The Transformation of Education in America Through the Arts."



Jennifer Townsend, MMT, MT-BC
 System Manager for Creative Arts Therapies
*Houston Methodist Hospital Center for
 Performing Arts*

Jennifer Townsend received her education in music therapy from Sam Houston State University and Temple University. After a decade of working in pediatrics, Jennifer now works in adult medical care. As the System Manager for Creative Arts Therapies at Houston Methodist she pilots programming in order to grow the footprint of music therapy throughout the hospital, participates and runs studies in research related to music therapy and music medicine and provides clinical supervision to the music therapy staff. Jennifer embraces an integrative philosophy which guides her practice and research. To this end, she has published articles relating to technology in music therapy, music therapy in epilepsy treatment, and music therapy in NICU work. Additionally, she has a chapter on Medically Fragile Children in the Guidelines for Music Therapy Practice in Pediatrics. Jennifer's passion for music therapy pushes her to advocate continuously at local, state and national levels and serve AMTA through board and committee positions.

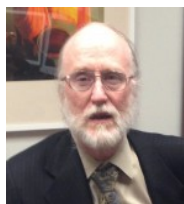


Emmanuel V. Dalavai, (Ph)DBA, MTM, SCPM
 Director Talent Management Population Health
Parkland Health & Hospital System

Passionate about cultural awareness, diversity, leadership development and improving the multicultural literacy of his clients, Emmanuel Dalavai has taught people from around the world to understand each other better. He has lived on three continents in places like India, Kansas City, Dallas, London, and Paris. He is a lifelong learner and *avid tennis and baseball fan/player!*

Emmanuel's career began in technical sales with SBC Communications & AT&T. As a global business leader, he has worked in the telecommunications, healthcare and aviation/aerospace industries, with companies like Texas Health Resources (THR), AMN Healthcare, and Boeing. He has held several management roles and has been involved in building a full suite of talent management programs at AT&T, THR, AMN, and at Aviall/Boeing. Presently, Emmanuel is employed with Parkland Health & Hospital System, where he is Director of Talent Management Strategy in Population Health. He also occasionally serves as an executive coach and is available to teach courses through Parkland Academy.

Emmanuel received his Bachelor of Arts degrees in Chemistry and French from the University of Kansas, and also did research on Alzheimer's disease while living in France. He earned a MBA and Masters in Telecommunications Management at TCU and the University of Dallas (UD), respectively. He holds degrees in project management from Stanford, and recently obtained his Executive Doctorate (Ph.DBA) from UD. When not engaged in research, teaching or playing sports, Emmanuel enjoys spending time with his family and traveling to new destinations.



Richard McKeon, PhD
 Chief Suicide Prevention Branch, *Substance
 Abuse and Mental Health Service Administration
 (SAMHSA)*

Richard McKeon Ph.D., MPH received his Ph.D. in Clinical Psychology from the University of Arizona, and a Master's of Public Health in Health Administration from Columbia University.

Dr. McKeon has spent most of his career working in community mental health, including 11 years as director of a psychiatric emergency service and 4 years as Associate Administrator/Clinical Director of a hospital-based community mental health center in Newton, New Jersey. In 2001, he was awarded an American Psychological Association Congressional Fellowship and worked in the United States Senate, covering health and mental health policy

issues. He spent 5 years on the Board of the American Association of Suicidology as Clinical Division Director and has also served on the Board of the Division of Clinical Psychology of the American Psychological Association. He is currently Chief for the Suicide Prevention Branch in the Center for Mental Health Services, of the Substance Abuse and Mental Health Services Administration, where he oversees all branch suicide prevention activities, including the Garrett Lee Smith State/Tribal Youth Suicide Prevention, and Campus Suicide Prevention grant programs, the National Suicide Prevention Lifeline, the Suicide Prevention Resource Center, and the Native Connections program. In 2008, he was appointed by the Secretary of Veterans Affairs to the Secretary's Blue Ribbon Work Group on Suicide Prevention. In 2009, he was appointed by the Secretary of Defense to the Department of Defense Task Force on Suicide Prevention in the Military. He served on the National Action Alliance for Suicide Prevention Task Force that revised the National Strategy for Suicide Prevention and participated in the development of WHO's World Suicide Prevention Report. He is also the Co-Chair of the Federal Working Group on Suicide Prevention.



Steve Meurer, MBA, MHS, PhD

Executive, Principle, Data Science and Member Insights
Vizient

Steve Meurer is Executive Principal, Data Science and Member Insights at Vizient. In this role, Dr. Meurer works with hospital, quality and physician leaders at member organizations to help them understand and use comparative data to motivate improvement. Dr. Meurer has presented at hundreds of hospitals including almost every academic medical center. Prior to this role, Dr. Meurer was the Senior Vice President for Business Development and Product Innovation, leading the comparative data portfolio at University Health System Consortium (UHC), one of the companies that became Vizient. In this role, Dr. Meurer used his background in hospital administration and expertise as a data scientist and change agent to increase engagement in UHC's comparative data and performance improvement products and services. Dr. Meurer was with UHC since 2007.

Before UHC Dr. Meurer spent 15 years in healthcare administration, including roles as the Chief Quality & Information Officer at the DeKalb Regional Healthcare System in Atlanta, and the Vice President of Operations and Performance Improvement at St. Mary's Medical Center in Langhorne, Pennsylvania. Dr. Meurer has spent time in increasing roles of responsibility at a number of organizations, including the Orlando Regional Healthcare System, University Pittsburgh Healthcare System and BJC Healthcare. In addition, Dr Meurer is an Associate Professor at Rush University in Chicago and has taught quality to Master's students there and at Loyola (Chicago), Georgia Tech, Georgia State, and Temple.

Dr. Meurer holds a PhD in Health Services Research from St. Louis University, where his dissertation was entitled 'Quality Improvement Implementation in Hospitals'. Dr. Meurer also holds

two Masters from the University of Florida, and a BA in Psychology from the College of the Holy Cross.



Luigi Meneghini, MD, MBA

Professor of Internal Medicine, *University of Texas (UT) Southwestern Medical Center*, Executive Director Global Diabetes Program, *Parkland Health & Hospital System*

Luigi Meneghini, MD, MBA is Professor of Internal Medicine at the University of Texas Southwestern Medical Center, Division of Endocrinology, in Dallas, Texas, and Executive Director of the Parkland Health and Hospital System's Global Diabetes Program, where he is charged with implementing a system-wide program to organize, integrate and optimize diabetes management among primary, specialty and acute care settings, leveraging IT and population health expertise, community resources and human capital to reduce chronic disease burden. Dr. Meneghini was born in Italy, raised in Liberia and naturalized in the US.



Ildiko Lingvay, MD, MPH, MSCS

Professor of Medicine, *University of Texas (UT) Southwestern Medical Center*

Dr. Ildiko Lingvay is Professor of Medicine in the Division of Endocrinology as well as the Department of Clinical Sciences at UT Southwestern Medical Center.

Dr Lingvay leads a research program that focuses on clinical research in the field of obesity and Type 2 diabetes, with the ultimate goal to improve the lives of all patients who suffer so many health consequences as a result of their medical problems. Her research interests span the spectrum from pathophysiology of the disease to treatment algorithms and comparative effectiveness of various therapeutic approaches. Dr Lingvay sees patients at the UT clinics and hospital as well as the Parkland Health & Hospital System.

Dr. Lingvay is an active member of the American Diabetes Association, where she has served on several committees, including the Organizing Committee for the 2017-2019 Annual Scientific Sessions. She has participated in many clinical trials and has a special interest in cardiovascular trials in diabetes. Her work has been published in major medical journals.



Steve Miff, PhD

President & CEO
Parkland Center for Clinical Innovations

Dr. Steve Miff is the President and CEO of PCCI, a leading, non-profit, innovation, artificial intelligence, and cognitive computing organization. Before joining PCCI, Dr. Miff served as the General Manager at Sg2, a national advanced analytics and consulting business serving over 1,200 leading healthcare systems. He led the organization's strategy, operations and growth, and had overall P&L responsibility for the \$55M+ business. Dr. Miff also led Sg2's merger and integration during the VHA, MedAssets and Sg2 acquisition. Prior to Sg2, he

was the Senior Vice President of clinical strategy, population health, and performance management at VHA (Vizient Inc.). Dr. Miff was a member of the senior management team and the executive oversight committee. His role with VHA included P&L responsibility across seven national business units with a total of over \$25 million in revenue. Dr. Miff launched and grew three new enterprise businesses, led the development and rollout of several key strategic partnerships/acquisitions, and was a senior member of the integration team for the VHA, UHC, and Novation merger. Prior to VHA, Dr. Miff served in various leadership positions in technology/consulting start-ups, as well as roles at the Rehabilitation Institute of Chicago, National Institute of Standards and Technology, and St. Agnes Hospital System.



Marianne Gargour, MFA, MS
Painter/Creative Coach

Creative Director of MG Painting & Design since 2006. Loves being a Creative Coach and an Art Teacher. Fell in love with painting at age 15 and has never stopped. Paints loose paintings of traditional subjects with a contemporary flair.

Infuses her work with a Mediterranean light and seeks abstraction. Represented by OnCenter Gallery in Provincetown, MA. Has had several Solo Shows in D.C. & Dallas. Has a large following in Dallas, D.C. and Europe.

Earned a B.A. at McGill University in Montreal, Quebec. MFA from Parsons School of Art and Design, NYC. MA in Coaching Fall 2019 Enrolling at UTD. Raised in a French-speaking home in Bethesda, MD. Is learning to play golf, loves to exercise and hike. Loves movies and binging on cable series. Loves the beach and the mountains. Wants to learn piano. Loves books on cognition and the ability to change.



Sarah Fontenot, BSN, JD, CSP

A former nurse and practicing attorney, Sarah Fontenot is a professional speaker who specializes in explaining how health care is changing and what that means for health care providers and their patients. Sarah is the

Adjunct Professor for Health Law at Trinity University (for 22 years!). She speaks extensively for the American College of Healthcare Executives [ACHE] and multiple national provider organizations. Her twice-monthly newsletter "Fontenotes" provides concise information about our health care system and currently reaches an average of 25,000 readers. Sarah is a proud member of the Board of Directors at Peterson Health in Kerrville, Texas.



Tim Bray, PhD
Director
Institute for Urban Policy

Dr. Timothy M. Bray is the Director of the Institute for Urban Policy Research at the University of Texas at Dallas. IUPR truly believes

that the fruits of research and community development must motivate the caliber of sustainable change necessary to improve quality of life and build a better world, one community at a time. The Institute directs its efforts toward those ends by conducting strategic and evaluation research that informs the direction of community-oriented organizations provides training and technical assistance to increase organizational and programmatic capacity and provides specific project-based consulting and guidance.

Dr. Bray is on the faculty of the School of Economic, Political, and Policy Studies at the University of Texas at Dallas, where he teaches in the Public Policy and Political Economy (PPPE) and Social Data Analysis and Research (SDAR) programs, and teaches graduate and upper division courses in quantitative methodologies and structural correlates of social disorganization. Dr. Bray serves on the Urban Institute's National Neighborhood Indicators Partnership, is a partner in the Brookings Institution's Metropolitan Policy Program, and as a member of the Editorial Board of the Academy of Criminal Justice Science's Justice Evaluation Journal.

Dr. Bray received his Ph.D. in Criminology from the University of Missouri-St. Louis. Before earning his doctorate, Dr. Bray served as an Assistant Bureau Chief with the Illinois State Police, where he headed the strategic and operational research units. Dr. Bray was awarded the Achievement Medal for his innovative approach to solving contemporary and traditional policing issues. Before heading research operations for the Illinois State Police, Dr. Bray worked in areas of strategic planning and performance measurement, then in an advisory capacity to the department's Deputy Director for the Information and Technology Command. In addition to state police experience, Dr. Bray has worked in city and county agencies.

Dr. Bray's current research focuses on the development of multidimensional indicators for quality of life and disparities in quality of life and the collective efficacy of private-public community-based partnerships. He was instrumental in the Institute's launch of the Wholeness Index, a comprehensive index of disparities in quality of life that taps 12 key dimensions of social dislocation. Also, Dr. Bray's research includes the development and application of hierarchical models to explain variation in neighborhood levels of social dislocations, including assessing and controlling for spatial dependence in the data.

A native of St. Louis, Dr. Bray resides with his wife and five daughters in North Texas.



Brett Moran, MD
Chief Medical Information Officer
Associate Chief Medical Officer
Parkland Health & Hospital System

Professor, Internal Medicine
UT Southwestern Medical Center

Brett is the first ever Chief Medical Informatics Officer (CMIO) at Parkland Health & Hospital System and helped steward them from being a paper-based hospital to be a fully electronic institution within 3 years. Graduating from UT Southwestern Medical School,

and subsequently Internal Medicine Residency, he joined the General Internal Medicine Department in 1997, ultimately becoming a full professor. He is dual board certified in both Internal Medicine and Clinical Informatics.

In his role as CMIO, he has been deeply involved in quality and safety projects—helping engineer informatics solutions to remediate or mitigate. He has collaborated with researchers on a variety of initiatives, facilitating informatics solutions, including the Population-based Research Optimizing Screening through Personalized Regimens (PROSPR) program, CPRIT grant awards, and the NIH Collaboratory on “Improving CKD with PIECES” and studied the best practices for rounding behaviors in academic programs in the electronic era.

In April of 2016 he was humbled to be voted as the Physician Academy Council Physician of the Year, an award given annually to a physician member of Epic community, selected by his/her physician informatics peers across the nation, in recognition of outstanding contributions to the community. He has given nearly 30 presentations at the Epic National User Group meetings over the years on a variety of clinical informatics topics and is honored to have had 4 selected as “classics”. His current interests and focus include predictive analytics, improving alert fatigue and addressing physician burnout, improving physician EHR training and proficiency, and developing innovative solutions for safety net methodology for capturing potential patient care omissions.



Lisa Kirsch, MPAff

Senior Policy Director at Dell Medical School,
The University of Texas at Austin

Lisa Kirsch is the Senior Policy Director at the Dell Medical School at the University of Texas at Austin. She conducts health policy research and analysis to support innovations in health care delivery and payment. Prior to joining Dell Med, Lisa worked for over 13 years at the Texas Health and Human Services Commission (HHSC) on Medicaid and Children’s Health Insurance Program policy issues. Most recently, she served as the Chief Deputy Medicaid/CHIP Director, where she oversaw the policy department and the development and implementation of the over \$10 billion Delivery System Reform Incentive Payment (DSRIP) program under Texas’ 1115 healthcare transformation waiver. Prior to joining HHSC, Lisa worked for a Texas home health and community care services provider and the Arizona Joint Legislative Budget Committee. Lisa is a graduate of The University of Arizona (BA) and the LBJ School of Public Affairs at UT Austin (MPAff).



Noelle Gaughen

Healthcare Transformation Waiver Operations,
Medicaid and CHIP Services
Texas Health & Human Service Commission

Noelle Gaughen is a Project Manager for the Healthcare Transformation Waiver at the Texas Health and Human Services Commission. She has been working with the waiver unit since January, 2014 and works primarily with quality measures and

waiver evaluation. She holds a Masters of Public Affairs from the University of Texas at Austin.



Mark Hernandez, MD

Chief Medical Officer
Community Care Collaborative

Mark S. Hernandez, M.D., as the Chief Medical Officer and Executive Vice President of the Community Care Collaborative, works with

multiple clinicians and service organizations throughout Travis County to transform the delivery of healthcare and achieve better health for the population.

Dr. Hernandez started in health care in 1993, when he was licensed as a registered nurse and worked for the Harris County Hospital District in Houston as an intensive care nurse. During that time, he attended Baylor College of Medicine graduating in 2003, did his residency in internal medicine at University Medical Center Brackenridge and, upon graduation, served as the chief resident. He entered general internal medicine practice with Scott & White Clinic in Pflugerville before returning to Seton in 2008 as an academic hospitalist at University Medical Center Brackenridge. Over the next few years, he served as the medical director for the hospital medicine group, the hospital ambulatory clinics, including the Shivers Cancer Center and Infusion Suite, as well as an internal medicine primary care clinic, numerous sub-specialty clinics and Seton Total Health Partners, a population health program to serve the needs of chronically ill under and uninsured patients in Travis County. In February of 2013, he became the Chief Medical Officer of the Community Care Collaborative, a unique public-private partnership charged with caring for approximately 100,000 low income residents in Travis County, Texas.

Dr. Hernandez is board-certified in internal medicine since 2006. He has served on the faculty of both the University of Texas Medical Branch, the University of Texas Southwestern Medical School and is currently a member of the Dell Medical School at The University of Texas. He has served as a lecturer for The University of Texas in the College of Pharmacy, Nursing and Liberal Arts. He enjoys cooking, listening to good music and riding motorcycles. He and his wife Patti have 6 children and one granddaughter.

PROVIDER PANEL

Panel Moderator:



Kristin Tesmer

President
*Dallas-Fort Worth Hospital Council Education
and Research Foundation*

As the President of the Dallas-Fort Worth Hospital Council’s Education and Research Foundation and Senior Vice President of the Dallas-Fort Worth Hospital Council, Kristin Tesmer provides leadership for regional health system and community organization collaborations focused on improving the health and healthcare of the residents of North Texas.

Under Kristin’s tenure, more than 10 million dollars in non-local grant funding has been awarded to the Foundation to enhance the

investments made in various initiatives led by our local health systems, physicians, foundations, and community partners. She is dedicated to improving our region's health and considers it an honor to serve this community, its health providers and its policy makers in their efforts to bridge the gap between our collective desire to be well and our current state of wellness.

Kristin earned her J.D. from the University of Texas, Austin School of Law, a degree in Finance from the M.J. Neeley School of Business at Texas Christian University and an M.B.A. from the Jindal School of Business at the University of Texas, Dallas. She is married to David Tesmer and has two daughters, Georgia and Sarah.

Panel Participants:



Joe Paul Gallo CST, RN, WHNP BC-E, MSN Ed, CHW

Director of Chronic and Communicable Disease Management
Denton County Public Health

Joe Paul Gallo currently serves at Denton County Public Health as the director of chronic and communicable disease management (diabetes, hypertension, tuberculosis, and Hansen's disease).

He began his medical career at Denton Regional Medical Center (Medical City Denton) as a board certified surgical technologist and surgical first assistant. He received his Registered Nursing degree from North Central Texas College. He then attended University of Texas Southwestern Medical School, graduating as a board-certified Women's Health Nurse Practitioner. He also holds a Master's of Science in Nursing with emphasis in nursing education from Grand Canyon University. Aside from his duties as the director of chronic and communicable disease management, he is an adjunct instructor at Grand Canyon University within the College of Nursing, teaching ethics in modern healthcare and community health, for the RN to BSN program.

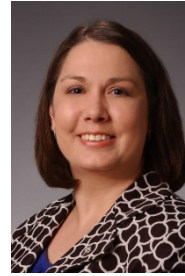
He lives on a farm with his wife of 37 years, three dogs, and one cow. He enjoys spending his time growing organic produce during the summer and relaxing with his family. His wife is the middle school science chair and lab instructor at Liberty Christian School located in Argyle, Texas alongside both of their daughters - one teaching middle school history and the other teaching middle school biology. His son has accepted a professorship at George Mason University researching urban wildlife ecology.



Sylvia Cave,
Director of 1115 Waiver Services
LCSW-Supervisor
Texoma Community Center

Sylvia Cave is a Licensed Clinical Social Worker-Supervisor. With more than 20 years in the field, she has expertise and experience in individual and family mental health diagnosis and treatment including crisis intervention, psychosocial evaluation, risk assessment and foster/adoptive home studies. Currently she is the Director of

Clinical Operations for the federally funded 1115 Waiver operations at Texoma Community Center.



Shelby Bedwell
Director of Medicaid Waiver
University North Texas Health Science Center

As the Director of Medicaid Waiver Programs at the University of North Texas Health Science Center in Fort Worth (UNTHSC), Shelby is responsible for directing and managing the 1115 Medicaid Waiver program at the institutional and department levels. Her primary responsibilities include leading, managing, and successfully implementing the 1115 Waiver program in a way that enables revenue growth and improves efficiencies. She enjoys working with innovative programs and finding creative solutions to fulfill the mission of UNTHSC.



Karen Duncan, MD, MBA
Executive Vice President, Community Health Services
JPS Health Network

Karen is Executive Vice President of Community Health Services at John Peter Smith Hospital. She is a board-certified pediatrician with clinical practice, medical leadership and executive leadership experience.

Karen has experience working in large public academic health centers with diverse patient populations. She has held leadership positions at Chicago's Cook County Health and Hospital System and Atlanta's Grady Memorial Hospital System. Previous to joining JPS, she was with Health Management Associates, healthcare consultant firm, where she held the position as Principal.

Karen operates from the premise that patients come first and that the healthcare delivery system must be flexible and ready to change to meet the needs and expectations of patients.

Karen is a fellow with the American Academy of Pediatrics and member of the American Association for Physician Leadership. Karen received her M.D. from Emory University School of Medicine. She completed her Bachelor of Arts degree in biochemistry at Smith College and completed the Executive MBA Program at Georgia State University.



Lauren Poe
Director Population Health 1115 Waiver Administration
JPS Health Network

Lauren is the Director of Population Health at John Peter Smith Health Network where she is responsible for providing strategic direction, planning and implementation of a Population Health strategy that is focused on the Quadruple Aim. Additionally, she serves as the 1115 Waiver Anchor for Regional Healthcare Partnership (RHP) 10.

Prior to joining JPS Health Network, Lauren served in leadership positions in System Strategy, Physician Enterprise and Geriatric Services at CHI St. Joseph Health in Bryan, Texas. During that time, she led efforts to increase access and enhance patient flow in primary care clinics, overseeing new clinic expansions and Patient Centered Medical Home accreditation. Lauren led a team to open and operate the first of its kind senior health and wellness center, MatureWell Lifestyle Center, as well as led efforts to develop an academic teaching partnership for interdisciplinary clinical training.

Lauren believes whole-heartedly in the Quadruple Aim and serves with the patient at the forefront of all that she does. In order to improve the health of our population, Lauren believes we must work together with clinicians and patients to coordinate care across the continuum, ensuring we are providing the right care, at the right time, in the right setting for each and every individual.

Lauren received her Bachelor of Science degree from Texas A&M University and her Master of Healthcare Administration degree from Texas A&M Health Science Center.

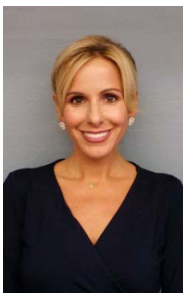


Maurice King
Director Transformational Initiatives
Parkland Health & Hospital System

Maurice King is a graduate of Xavier University of Louisiana College of Pharmacy located in New Orleans Louisiana.

Maurice has been a licensed practicing pharmacist in the great state of Texas (Dallas-Fort Worth area) for over 36 years. Throughout his career Maurice's managerial skills and leadership abilities have garnered him countless process improvement successes and awards in Retail Pharmacy, Manage Care Pharmacy, Home Health Pharmacy, Nursing Home Consulting, and Pharmacy focused Information Technologies, Hospital Pharmacy and Ambulatory Care pharmacy. Maurice has been fortunate enough to have worked for some of the most cutting-edge healthcare industry leaders such as Kaiser Permanente, Baylor University Medical Center, and Parkland Health and Hospital Systems.

Currently Maurice is the director of Transformational Initiatives, overseeing the 1115 Waiver initiatives and measure outcomes for Parkland Health and Hospital Systems. Maurice is a world traveler, gourmet cook, avid runner, cyclist, and dog lover.



Christina Mintner
Vice President 1115 Anchor Waiver
Parkland Health & Hospital System

Christina Mintner currently serves as Vice President of Waiver Operations at Parkland Health & Hospital System and is the RHP 9 Anchor for the Texas Medicaid Transformation Waiver. Her primary focus is to develop and lead strategic initiatives related to health care transformation across the 3-

county region. Christina also oversees Parkland's Homeless Outreach Medical Services program (HOMES). The program provides medical, dental and behavioral health services to children and adults who are homeless and serves close to 9000 patients annually.

Prior to joining Parkland in 2013, she spent 13 years with Harris Health System in Houston, Texas. During this time she was responsible for the operations of all pediatric services in 2 hospitals and 22 primary and specialty sites, including a network of school-based clinics. From quality and overall operations to patient satisfaction and financial integrity, she led in a matrix organization to achieve verifiable results in performance improvement, strategy, and new service implementation.

Christina received her B.S. from Oklahoma State University and her M.S. from Texas Woman's University - Houston, both in Nutritional Sciences.